

2ND QUARTER 2003



# DIVISION SIX BCA NEWSLETTER



A newsletter published for the members of BCA Division Six from the great states of North Dakota, South Dakota, Minnesota, Iowa, Nebraska, Kansas, and Missouri!

Please send all submissions to the editor, Karen Zimny, karen@pantheonbulldogs.com.  
Mail: Karen Zimny, 9106 Wilton Bridge Rd., Waseca, MN 56093  
Phone: 507-835-5660

#### **Division VI Officers:**

President: Wayne Brower  
Vice President: Linda Shelburg  
Secretary: Jo Hanson  
Treasurer: Robert Cocks

#### **Governors:**

Dean Dickey  
Rita Guthmiller  
Rick Hart  
Kym Thew

#### **Councilors:**

Marilyn Burdick  
Patty Hart  
J.W. Larrick  
Darlene Stuedeman

#### **Did you know?**

We are now on the web!

[www.bcadivision6.org](http://www.bcadivision6.org)

#### **Division VI Clubs and Secretaries:**

Bulldog Club of Central Iowa - Linda Shelburg - 515-225-8743 lshelbrg@mchsi.com  
Bulldog Club of Greater St. Louis - Diann Fowler 314-894-1500 [tony-diann@prodigy.net](mailto:tony-diann@prodigy.net)  
Heart of America Bulldog Club - Sandy Aspey - 816-475-2052 aspeybull@aol.com  
St. Paul / Minneapolis Bulldog Club, Inc. - Jackie Bergeron donderosadaisy@hotmail.com



# Meeting Minutes



**Meeting was called to order by President Wayne Brower 4/11/2003 St Joseph MO**  
**Roll Call: Marilyn Burdick: Wayne Brower: Darlene Stuedemann: Patsy Hart: Jo Hanson: Dean Dickey: Russ Schuveiller: Rick Hart: Rita Guthmiller: Linda Shelburg: Kym Thew**

**Treasurers Report:** Approve As Submitted

**Secretaries Report:** Approve As Submitted

**Old Business:** Wayne gave an update on the newsletter, everything is going fine. Karen Zimny is doing a superb job and we would all like to thank her and give her all the support she needs.

There was a discussion regarding giving the BCA Charitable Fund and BCA Rescue Fund each 10% of the \$5,729.28 profit from the Nationals. A motion made by Linda, seconded by Rick, to give 10% of the profits to each of the entities carried.

**New Business:** Karen Zimny and Dena Gustaf asked if the Division would pay \$100.00 a year to have a web site. They will create it and keep it updated. Everyone thought it was a great idea and would give clubs and division members more information on what is going on in their area, list all shows, officers, who to contact for rescue and membership, etc. A motion by Linda, seconded by Dean, for a web site carried.



**New Members : Approved Lin Davis, Golden City NE Kimberly Mason, Bellevue NE Richard Foster, Coffeyville KS**

**Next meeting** Minnesota August 21st or 22<sup>nd</sup> during their Specialty Show

**Motion to adjourn by Kym, second by Rita motion carried; meeting adjourned. Submitted by Jo Hanson Div VI Secretary.**

# Brag!

We'll take a brag about anything! We ask a donation for each brag. Brag about children, grandchildren, and of course, DOGS! \$1 per line, minimum 2 lines. Send check made out to BCA Division VI to Karen Zimny, 9106 Wilton Bridge Rd, Waseca, MN 56093

Randy & Linda's Fanny III had quite a fun March. Dubuque IA 3/22 2 pts, Dubuque IA 3/23 2 pts, Clinton IA 3/29 1 pt, & Clinton IA 3/30 1 pt. Now we are major hunting ! ! !

Kym and Jamie Thew's KG's Bullyful Beulah went BOW & BOS in St. Petersburg, FL for 2 points on Sat. She's up to 8 pts now.

Karen Zimny & Chris Osterloh's "Moose" (Pantheon Magnificent Magni) went BOW at Apple Valley Saturday, 4/11/03 and Sunday 4/12/03. "Lizzie" (Pantheon Kallisto Kutie) went BOS at the same shows!

Karen Zimny & Chris Osterloh's "Moose" (Pantheon Magnificent Magni) went Best of Breed at the Waterloo, IA show 4/20 to finish his Championship title.

Jamie & Kym Thew are proud to announce that "Bullyful's Say Good-Nite Gracee" received her first "Major" on Saturday April 19th at the Mason City Kennel Club Show under breeder judge Stewart Wagner. MiMi the Snow Queen is very proud of her daughter !

Karen Zimny & Chris Osterloh's "Moose" (Ch. Pantheon Magnificent Magni) went Best of Breed at the Fargo, ND show 5/30.

Northwood's Head Honcho goes WD, BW in Cambridge on May 10th  
Northwood's Icing on the Cake goes WB, BOS in Cambridge on May 10th  
Northwood's Icing on the Cake goes WB, BOS in Cambridge on May 11th  
Northwood's Head Honcho goes WD, BOB in Fridley on May 17th  
Northwood's Icing on the Cake goes WB, BOS in Fridley on May 17th  
Northwood's Head Honcho goes WD, BOB in Fridley on May 18th  
Northwood's Icing on the Cake goes WB, BOS in Fridley on May 18th  
Northwood's Head Honcho went Winners dog, best of winners for a five point major in Fargo on June 1st. Aaron & Tricia Johnson

Northwood's Little Rascal (a.k.a. Spanky) owned by Tim Fahey and Sarah Delong, and Aaron and Tricia Johnson went WD, BW in St. Peter on May 24th for his final point. This is Tim and Sarah's first champion and Aaron and Tricia's first homebred champion. Congratulations Spanky!

Sat. & Sun 5-24-25 in Hutchinson, our Anger's Lady Grace of Bedrocks became an International Champion. Dave and Joella Anger

Rita & Reiny Guthmiller's Reingold High Flyer (a.k.a. RJ) went Winners Dog at Cambridge and Winners dog at Waconia.

Karen Zimny & Chris Osterloh's "Lizzie" (Pantheon Kallisto Kutie) went WB at the Lake Minnetonka show June 8th.

## **Sponsor a Trophy!**

**If you'd like to sponsor a trophy for the SPMBC August specialty call Jim Hale at 952-432-0527 or Aaron Johnson at 763-545-7348.**

## **Get to Know Your Fellow Bulldoggers!**

Please submit "trivia" about your friends, yourselves, and other members!

Match the Division Six member to the correct statement.

1. I work with ceramics and stain glass, also refinish cars as a hobby. And I coached wrestling and was inducted into the wrestling hall of fame.
2. I am a walking encyclopedia of military history and movie trivia.
3. I broke my finger during a golf game when I hit the ball. I also broke a finger when I was thrown from a horse.
4. As a child, I taught a calf to play "hide and seek", had a baby skunk as a pet and my brothers and I played "rodeo" by riding around on sheep.
5. I started my own lawn mowing business when I was 10 years old. I use to own a 1966 Mustang GT and worked at a Mustang Auto Parts Supply Company (Maryland Mustang) out east and that is where I met my future wife "over the phone."  
I am a sports fanatic and worship ESPN. Cal Ripken is my favorite sports figure. I use to be a baker and now I'm a window maker.

Choices: Phil Shelburg, Wayne Brower, Jamie Thew, Reiny Guthmiller, Duwane Miller

Thank you to Jo Hanson for providing information. Phil, Wayne, Jamie, Reiny, Duwane its your turn to "rat out" someone else! Send information to [karen@pantheonbulldogs.com](mailto:karen@pantheonbulldogs.com)

Answers: 1 Duwane Miller, 2 Phil Shelburg, 3 Wayne Brower, 4 Reiny Guthmiller, 5 Jamie Thew

A man wrote a letter to a small hotel in a Midwest town, which he planned to visit on his vacation. He wrote, "I would very much like to bring my dog with me. He is well groomed and very well behaved. Would you be willing to permit me to keep him in my room with me at night?"

An immediate reply came from the hotel owner, who said, "I've been operating this hotel for many years. In all that time, I've never had a dog steal towels, bedclothes, silverware or pictures off the walls. I've never had to evict a dog in the middle of the night for being drunk and disorderly. And I've never had a dog run out on a hotel bill. Yes, indeed, your dog is welcome at my hotel, and if your dog will vouch for you, you're welcome to stay here, too!"

## 2ND QUARTER 2003

SHOW	CITY & STATE	TYPE	Day	SHOW DATE
Kennel Club	Hutchinson, MN	AB/O/JSHW	Sat	7/5/2003 Closes: Wed 06/18
St. Paul Dog Training Club	Lake Elmo, MN	AG	Sat	7/5/2003 Closes: Fri 06/13
Kennel Club	Sedalia, MO	AB/O/JSHW	Sat	7/5/2003 Closes: Wed 06/18
Wright County Minnesota Kennel Club	Hutchinson, MN	AB/O/JSHW	Sat	7/6/2003 Closes: Wed 06/18
St. Paul Dog Training Club	Lake Elmo, MN	AG	Sun	7/6/2003 Closes: Fri 06/13
Jefferson City Missouri Kennel Club	Sedalia, MO	AB/O/JSHW	Sun	7/6/2003 Closes: Wed 06/18
Duluth Kennel Club	Duluth, MN	AB/JSHW	Fri	7/11/2003 Closes: Wed 06/25
Twin Ports Dog Training Club	Duluth, MN	O	Fri	7/11/2003 Closes: Wed 06/25
Duluth Kennel Club	Duluth, MN	AB/JSHW	Sat	7/12/2003 Closes: Wed 06/25
Twin Ports Dog Training Club	Duluth, MN	O	Sat	7/12/2003 Closes: Wed 06/25
Duluth Kennel Club	Duluth, MN	AB/O/JSHW	Sun	7/13/2003 Closes: Wed 06/25
Minnesota Agility Club	Shakopee, MN	AG	Sat	7/19/2003 Closes: Tue 07/01
Minnesota Agility Club	Shakopee, MN	AG	Sun	7/20/2003 Closes: Sun 07/06
Sioux Empire Kennel Club, Inc.	Sioux Falls, SD	AG	Fri	7/25/2003 Closes: Wed 07/09
Gateway AC Of Suburban St. Louis	St. Charles, MO	AG	Fri	7/25/2003 Closes: Wed 07/09
Sioux Empire Kennel Club, Inc.	Sioux Falls, SD	AG	Sat	7/26/2003 Closes: Wed 07/09
Gateway AC Of Suburban St. Louis	St. Charles, MO	AG	Sat	7/26/2003 Closes: Wed 07/09
Sioux Empire Kennel Club, Inc.	Sioux Falls, SD	AG	Sun	7/27/2003 Closes: Wed 07/09
Gateway AC Of Suburban St. Louis	St. Charles, MO	AG	Sun	7/27/2003 Closes: Wed 07/09
Kennel Club Of Freeborn Co, MN, Inc.	Albert Lea, MN	AB/O/JSHW	Sat	8/9/2003 Closes: Wed 07/23
Kennel Club Of Freeborn Co, MN, Inc.	Albert Lea, MN	AB/O/JSHW	Sun	8/10/2003 Closes: Wed 07/23
Burlington Kennel Club, Inc.	West Burlington, IA	AB/O/JSHW	Sat	8/16/2003 Closes: Wed 07/30
Burlington Kennel Club, Inc.	West Burlington, IA	AB/O/JSHW	Sun	8/17/2003 Closes: Wed 07/30
Leavenworth Kennel Club	Kansas City, MO	AB/O/JSHW	Thu	8/21/2003 Closes: Wed 08/06
St. Paul-minneapolis Bulldog Club	Maplewood, MN	S	Thu	8/21/2003 Closes: Wed 08/06
Leavenworth Kennel Club	Kansas City, MO	AB/O/JSHW	Fri	8/22/2003 Closes: Wed 08/06
St. Croix Valley Kennel Club, Inc.	Lake Elmo, MN	AG	Fri	8/22/2003 Closes: Wed 08/06
St. Paul-minneapolis Bulldog Club	Maplewood, MN	S/JSHW/SWPC	Fri	8/22/2003 Closes: Wed 08/06
Heart Of America Kennel Club, Inc.	Kansas City, MO	AB/O/JSHW	Sat	8/23/2003 Closes: Wed 08/06
St. Croix Valley Kennel Club, Inc.	Lake Elmo, MN	AB/O/JSHW	Sat	8/23/2003 Closes: Wed 08/06
St. Croix Valley Kennel Club, Inc.	Lake Elmo, MN	AG	Sat	8/23/2003 Closes: Wed 08/06
Heart Of America Kennel Club, Inc.	Kansas City, MO	AB/O/JSHW	Sun	8/24/2003 Closes: Wed 08/06
St. Croix Valley Kennel Club, Inc.	Lake Elmo, MN	AB/O/JSHW	Sun	8/24/2003 Closes: Wed 08/06
St. Croix Valley Kennel Club, Inc.	Lake Elmo, MN	AG	Sun	8/24/2003 Closes: Wed 08/06
Cedar Rapids Kennel Association, Inc.	Amana, IA	AB/O/JSHW	Sat	8/30/2003 Closes: Wed 08/13
Cedar Rapids Kennel Association, Inc.	Amana, IA	AB/O/JSHW	Sun	8/31/2003 Closes: Wed 08/13
Waterloo Kennel Club, Inc.	Amana, IA	AB/O/JSHW	Mon	9/1/2003 Closes: Wed 08/13
Bulldog Club Of Central Iowa	Des Moines, IA	S/JSHW/SWPC	Fri	9/5/2003 Closes: Wed 08/20
Des Moines Kennel Club, Inc.	Des Moines, IA	AB/JSHW	Sat	9/6/2003 Closes: Wed 08/20
Des Moines Obedience Training Club	Des Moines, IA	O	Sat	9/6/2003 Closes: Wed 08/20
Des Moines Kennel Club, Inc.	Des Moines, IA	AB/O/JSHW	Sun	9/7/2003 Closes: Wed 08/20
Bellevue Dog Obedience Club Of NE	Omaha, NE	AG	Fri	9/12/2003 Closes: Wed 08/27
Salina Kennel Club, Inc.	Salina, KS	AB/O/JSHW	Fri	9/12/2003 Closes: Wed 08/27
Missouri Rhineland Kennel Club	Sullivan, MO	AB/O/JSHW	Fri	9/12/2003 Closes: Wed 08/27
Bloomington Obedience Training Club	Bloomington, MN	AG	Sat	9/13/2003 Closes: Sat 08/23
Bellevue Dog Obedience Club Of NE	Omaha, NE	AG	Sat	9/13/2003 Closes: Wed 08/27
Rochester Minnesota Kennel Club, Inc.	Rochester, MN	AB/O/JSHW	Sat	9/13/2003 Closes: Wed 08/27
Wichita Dog Training Club, Inc.	Salina, KS	O	Sat	9/13/2003 Closes: Wed 08/27
Wichita Kennel Club, Inc.	Salina, KS	AB/JSHW	Sat	9/13/2003 Closes: Wed 08/27
Greater St. Louis Agility Club	Sullivan, MO	AG	Sat	9/13/2003 Closes: Wed 08/27
Missouri Rhineland Kennel Club	Sullivan, MO	AB/O/JSHW	Sat	9/13/2003 Closes: Wed 08/27
Bloomington Obedience Training Club	Bloomington, MN	AG	Sun	9/14/2003 Closes: Sat 08/23
Bellevue Dog Obedience Club Of NE	Omaha, NE	AG	Sun	9/14/2003 Closes: Wed 08/27
Rochester Minnesota Kennel Club, Inc.	Rochester, MN	AB/O/JSHW	Sun	9/14/2003 Closes: Wed 08/27
Hutchinson Kennel Club, Inc.	Salina, KS	AB/O/JSHW	Sun	9/14/2003 Closes: Wed 08/27
Missouri Rhineland Kennel Club	Sullivan, MO	AG	Sun	9/14/2003 Closes: Wed 08/27
Three Rivers Kennel Club Of Missouri	Sullivan, MO	AB/O	Sun	9/14/2003 Closes: Fri 08/29
Jefferson County Kennel Club Of Missouri	Gray Summit, MO	AB/O/JSHW	Fri	9/19/2003 Closes: Wed 09/03
Tri-city Kennel Club, Inc.	Davenport, IA	AB/JSHW	Sat	9/20/2003 Closes: Wed 09/03
Anoka County Minnesota Kennel Club	Forest Lake, MN	O	Sat	9/20/2003 Closes: Wed 09/03
St. Louis Dog Breeders Association, Inc.	Gray Summit, MO	AB/JSHW	Sat	9/20/2003 Closes: Wed 09/03
Des Moines Obedience Training Club	Indianola, IA	AG	Sat	9/20/2003 Closes: Fri 09/05
Tri-city Kennel Club, Inc.	Davenport, IA	AB/JSHW	Sun	9/21/2003 Closes: Wed 09/03
Anoka County Minnesota Kennel Club	Forest Lake, MN	O	Sun	9/21/2003 Closes: Wed 09/03
Spirit Of The Heartland Kennel Club	Gray Summit, MO	AB/JSHW	Sun	9/21/2003 Closes: Wed 09/03
Des Moines Obedience Training Club	Indianola, IA	AG	Sun	9/21/2003 Closes: Fri 09/05
Arrowhead Dog Agility Assoc Of Duluth	Proctor, MN	AG	Fri	9/26/2003 Closes: Wed 09/10
Fargo-moorhead Kennel Club	Fargo, ND	O	Sat	9/27/2003 Closes: Wed 09/10
Arrowhead Dog Agility Assoc Of Duluth	Proctor, MN	AG	Sat	9/27/2003 Closes: Wed 09/10
Fargo-moorhead Kennel Club	Fargo, ND	O	Sun	9/28/2003 Closes: Wed 09/10
Arrowhead Dog Agility Assoc Of Duluth	Proctor, MN	AG	Sun	9/28/2003 Closes: Wed 09/10
Salina Kennel Club, Inc.	Salina, KS	AG	Sun	9/28/2003 Closes: Wed 09/10
Key City Kennel Club, Inc.	St. Peter, MN	AG	Fri	10/3/2003 Closes: Wed 09/10
Cornhusker Kennel Club Of Lincoln, NE	Lincoln, NE	AB/JSHW	Sat	10/4/2003 Closes: Wed 09/17
Greater Lincoln Obedience Club	Lincoln, NE	O	Sat	10/4/2003 Closes: Wed 09/17
St. Paul Dog Training Club	St. Paul, MN	O	Sat	10/4/2003 Closes: Wed 09/17
Key City Kennel Club, Inc.	St. Peter, MN	AG	Sat	10/4/2003 Closes: Wed 09/10
Grand Island Kennel Club	Lincoln, NE	AB/O/JSHW	Sun	10/5/2003 Closes: Wed 09/17
St. Paul Dog Training Club	St. Paul, MN	O	Sun	10/5/2003 Closes: Wed 09/17

## 2ND QUARTER 2003

(Continued from previous page)

Key City Kennel Club, Inc.	St. Peter, MN	AG	Sun	10/5/2003	Closes: Wed 09/10
Lawrence Jayhawk Kennel Club, Inc.	Lawrence, KS	AB/O/JSHW	Sat	10/11/2003	Closes: Wed 09/24
Cyclone Country KC Of Ames, Inc.	Mason City, IA	AB/O/JSHW	Sat	10/11/2003	Closes: Wed 09/24
Lawrence Jayhawk Kennel Club, Inc.	Lawrence, KS	AB/O/JSHW	Sun	10/12/2003	Closes: Wed 09/24
Mason City Kennel Club	Mason City, IA	AB/O/JSHW	Sun	10/12/2003	Closes: Wed 09/24
Fargo-moorhead Kennel Club	Fargo, ND	AG	Fri	10/17/2003	Closes: Wed 10/01
Rapid City Kennel Club, Inc.	Rapid City, SD	AB/O/JSHW	Fri	10/17/2003	Closes: Wed 10/01
Fargo-moorhead Kennel Club	Fargo, ND	AG	Sat	10/18/2003	Closes: Wed 10/01
Twin Cities Obedience Training Club, Inc.	Minneapolis, MN	O	Sat	10/18/2003	Closes: Wed 10/01
Rapid City Kennel Club, Inc.	Rapid City, SD	AB/O/JSHW	Sat	10/18/2003	Closes: Wed 10/01
Fargo-moorhead Kennel Club	Fargo, ND	AG	Sun	10/19/2003	Closes: Wed 10/01
Twin Cities Obedience Training Club, Inc.	Minneapolis, MN	O	Sun	10/19/2003	Closes: Wed 10/01
Rapid City Kennel Club, Inc.	Rapid City, SD	AB/O/JSHW	Sun	10/19/2003	Closes: Wed 10/01
Bellevue Dog Obedience Club Of NE	Omaha, NE	O	Sat	10/25/2003	Closes: Wed 10/08
Sioux Empire Kennel Club, Inc.	Sioux Falls, SD	AB/O/JSHW	Sat	10/25/2003	Closes: Wed 10/08
Bellevue Dog Obedience Club Of NE	Omaha, NE	O	Sun	10/26/2003	Closes: Wed 10/08
Sioux Empire Kennel Club, Inc.	Sioux Falls, SD	AB/O/JSHW	Sun	10/26/2003	Closes: Wed 10/08
Bloomington Obedience Training Club	Bloomington, MN	O	Sat	11/1/2003	Closes: Wed 10/15
Bloomington Obedience Training Club	Bloomington, MN	O	Sun	11/2/2003	Closes: Wed 10/15
St. Paul Dog Training Club	St Paul, MN	AG	Sat	11/8/2003	Closes: Wed 10/22
Ozarks Kennel Club, Inc.	Springfield, MO	AB/JSHW	Sun	11/9/2003	Closes: Wed 10/22
St. Paul Dog Training Club	St Paul, MN	AG	Sun	11/9/2003	Closes: Wed 10/22
Council Bluffs Kennel Club	Council Bluffs, IA	AB/O/JSHW	Sat	11/15/2003	Closes: Wed 10/29
Council Bluffs Kennel Club	Council Bluffs, IA	AB/O	Sun	11/16/2003	Closes: Wed 10/29
Nebraska Kennel Club Inc	Omaha, NE	AB/O/JSHW	Sat	11/22/2003	Closes: Wed 11/05
Nebraska Kennel Club Inc	Omaha, NE	AB/O/JSHW	Sun	11/23/2003	Closes: Wed 11/05
Minneapolis Kennel Club, Inc.	Minneapolis, MN	AB/O/JSHW	Sun	11/30/2003	Closes: Wed 11/12
Wichita Dog Training Club, Inc.	Valley Center, KS	AG	Fri	1/30/2004	Closes: Wed 01/14
Wichita Dog Training Club, Inc.	Valley Center, KS	AG	Sat	1/31/2004	Closes: Sun 01/04
Wichita Dog Training Club, Inc.	Valley Center, KS	AG	Sun	2/1/2004	Closes: Wed 01/14
Sioux Valley Kennel Club, Inc.	South Sioux City, NE	AB/O/JSHW	Sat	5/15/2004	Closes: Wed 04/28
Sioux Valley Kennel Club, Inc.	Sioux City, IA	AB/O/JSHW	Sun	5/16/2004	Closes: Wed 04/28
Sioux Valley Kennel Club, Inc.	North Sioux City, SD	AB/O/JSHW	Sat	6/26/2004	Closes: Wed 06/09
Sioux Valley Kennel Club, Inc.	North Sioux City, SD	AB/O/JSHW	Sun	6/27/2004	Closes: Wed 06/09
Manhattan Kansas Kennel Club	Topeka, KS	AB/O/JSHW	Thu	8/12/2004	Closes: Wed 07/28
Topeka Kennel Club, Inc.	Topeka, KS	AB/O	Fri	8/13/2004	Closes: Wed 07/28
Manhattan Kansas Kennel Club	Topeka, KS	AB/O/JSHW	Sat	8/14/2004	Closes: Wed 07/28
Topeka Kennel Club, Inc.	Topeka, KS	AB/O	Sun	8/15/2004	Closes: Wed 07/28
Wright County Minnesota Kennel Club	Hutchinson, MN	AB/O/JSHW	Fri	10/1/2004	Closes: Wed 09/15
Tri-city Kennel Club, Inc.	Davenport, IA	AB/O	Sat	10/23/2004	Pending
Tri-city Kennel Club, Inc.	Davenport, IA	AB	Sun	10/24/2004	Closes: Wed 10/06

Source: www.infodog.com

## BULLDOG CLUB OF CENTRAL IOWA SPECIALTY

FRIDAY, SEPTEMBER 5, 2003

IOWA STATE FAIRGROUNDS VARIED INDUSTRIES BUILDING, NEWLY REMODELED AND AIR  
CONDITIONED

BULLDOGGERS HOTEL ACCOMMODATIONS  
VALLEY WEST INN, WEST DES MOINES  
(15 MINUTES FROM SHOW SITE)  
(515) 225-2524

RESERVATIONS MUST BE MADE BY 8-14-03 FOR SPECIAL  
RATE OF \$61.95 PER NIGHT

JUDGE: NANCY ROSE, DVM

Sweepstakes Judge: Betsy Milbach

All-breed shows follow on Saturday and Sunday, same location

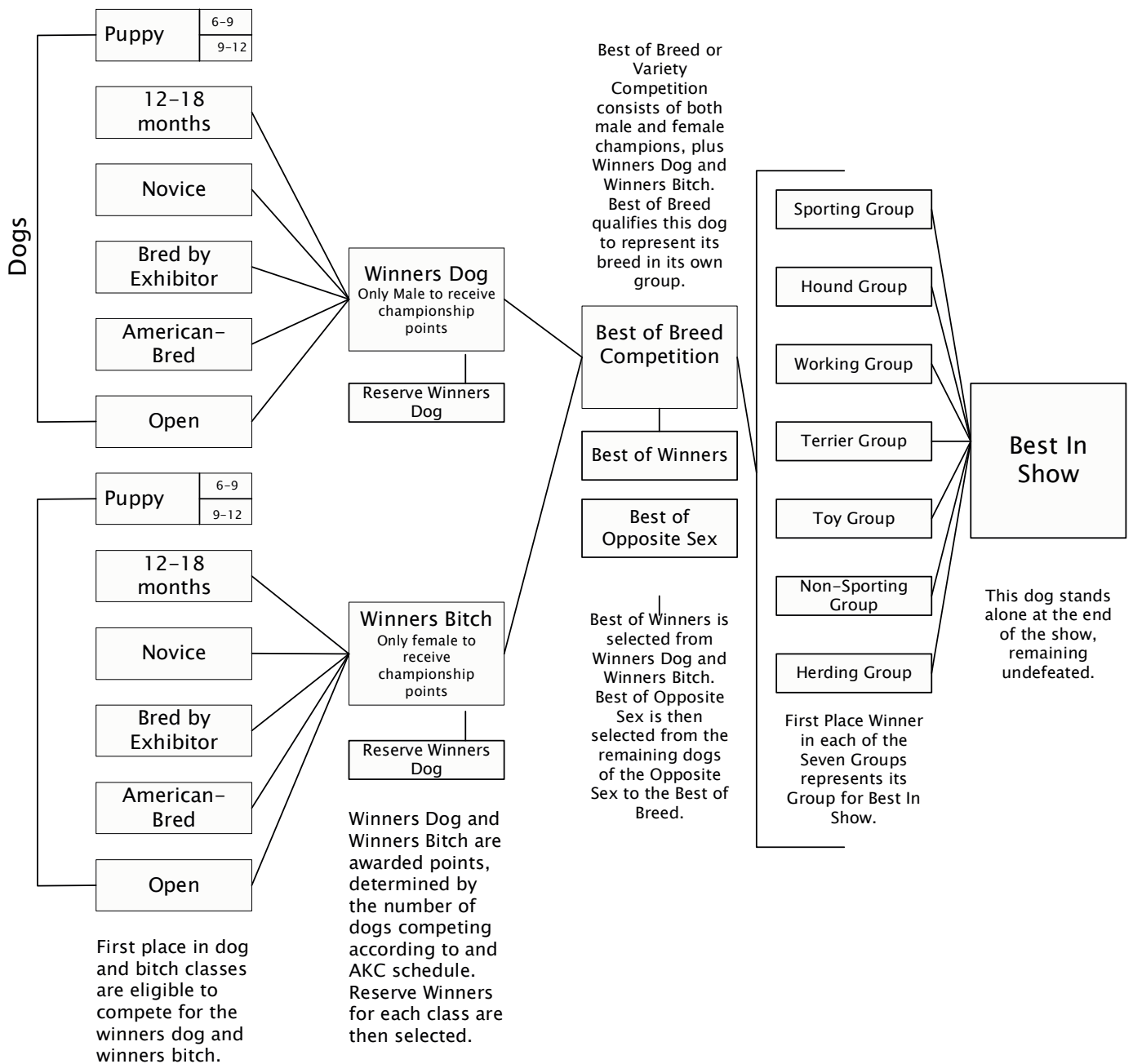
Pot luck and raffle Friday night

Free Seminar -Canine Movement and How It Relates to Bulldogs, presented by Breeder/Judge, Randy Miller

Contact Ed Lenning, (515) 825-3661 or [easyed@goldfieldaccess.net](mailto:easyed@goldfieldaccess.net)

# Flow Chart of Dog Shows

I find this useful when trying to describe how a dog show works. It certainly stopped the "Did you get best in show?" questions from my co-workers each Monday I'd return after a show. :-) Hope you find it useful as well. ---Karen



## St. Paul-Minneapolis Bulldog Club

Our annual specialty shows are scheduled for August 21 and 22 at the Best Western, Maplewood, MN. This coincides with the St. Croix Valley Shows at the Washington County Fairgrounds in Lake Elmo. Our judges will be regular classes, Mel Berger, August 21 and Dennis Ehntholt, August 22 and Carla Ehntholt will judge sweeps on August 22. There will be a banquet on Friday evening. Show chairman is Randy Miller. So mark you calendars, we hope to see all bulldoggers there.

Respectfully submitted by Jackie Bergeron, club secretary



**The Bulldog Club of Central Iowa** is busy planning for our September Specialty. Betsy Milbach will be judging sweeps and Nancy Rose, DVM, regular classes. We held our first annual Bully Fest for May 10 in West Des Moines. We were hoping to generate some interest in our Club by having fun events such as Biggest Feet, Longest Tail, etc. We also co-sponsored the Most Beautiful Bulldog Contest on April 21. Entries were limited to 50 bulldogs and the winner serves as the official mascot for the Drake University Relays.

Club meetings are held the 3rd Sunday of the month at 2:00 p.m. in the Des Moines area. Officers are President, Judy Robey (robeyj@captainjack.com), Vice President, Dorteia Ellis (Huntin2@aol.com), Secretary, Linda Shelburg (lshelbrg@mchsi.com), and Treasurer, Marilyn Burdick (marilynburdick@mchsi.com). Contact any officer for more information.

## GRACEE'S GOODIES

Gracee will submit goodie recipes, yes, human ones, too with a little help from her friends.  
Any submissions are welcome!

### Calico Beans

- 1 - 15 1/2 oz can baked beans
- 1 - 15 1/2 oz can kidney beans
- 1 - 15 1/2 oz can butter beans
- 1 cup catsup
- 1/2 cup brown sugar
- 1/3 cup molasses
- 2 tbsl Vinegar
- 1 onion, chopped
- 8 strips bacon
- 1 1/2 lbs. hamburger

Mix beans, catsup, brown sugar, molasses and vinegar in baking dish. Fry bacon and onion. Fry hamburger. Crumble bacon and add with hamburger to bean mix. Bake at 325 for 90 minutes. You can also cook in crockpot on low for 4-5 hours or until done.

## Ten top ways to tell if Martha Stewart is stalking your dog

10. There's potpourri hanging from his/her collar.
9. The dog's nails have been cut with pinking shears.
8. The dog toys are all stored in McCoy crocks.
7. The pooper scooper has been decorated with raffia bows.
6. That telltale lemon slice in the new silver water bowl.
5. You find liver and whole wheat dog treats stamped out with copper cookie cutters and decorated with royal icing using a #2 rosette tip.
4. Dog hair has been collected and put into wire baskets for nesting material for the birds.
3. A seasonally appropriate grapevine wreath adorns the front of your dog's crate.
2. Your dog goes outside naked and comes in wearing a thyme colored virgin wool hand-knitted sweater with matching boots.

AND THE NUMBER ONE WAY YOU KNOW THAT MARTHA STEWART IS STALKING YOUR DOG IS...

1. The dog droppings in your backyard have been sculpted into swans.

## S.P.M.B.C. Announces our Annual Specialty 4 Majors in one weekend !

Thursday August 21<sup>st</sup> 2003  
Regular Classes: Mel Berger  
Held at the Best Western  
Maplewood Inn

Friday: August 22<sup>nd</sup> 2003  
Sweepstakes: Carla Ehntholt  
Regular Classes: Dennis Ehntholt  
Held at the Best Western  
Maplewood Inn 1780 East County Road D  
Maplewood, MN 55109  
651-770-2811

Room Rate is \$ 79.95  
Mention you are w/the St. Paul / Mpls Bulldog Show

Saturday & Sunday August 23 & 24  
St. Croix Valley Kennel Club  
Washington County Fairgrounds  
Lake Elmo, Minnesota

For information call Randy Miller  
612-529-9055



## A Dog's Diary

5:30 a.m. - Started the day as a hero! When the sound of the newspaper hitting the driveway roused me from my deep slumber - the impact indicating the paper was much heavier than normal - I realized that no one in the house was yet awake! I roused my master by licking him in the face. He appeared very angry with himself for having overslept, shouting and waving his arms. His ill temper even seemed directed at me a bit, which is silly since it is I who saved him from being fired. Funny thing though: he didn't go into work, but spent the morning leafing through the large newspaper and drinking coffee. He seems to do this once a week, and I don't know why.

7:30 a.m. - Invaders! The people who live next door came out into their yard, obviously getting ready to lay siege to our house. Snarling and barking, I let them know in no uncertain terms that I was prepared to tear them limb from limb if they came any closer, and was able to repel the invasion. This is an almost daily occurrence; you'd think they'd learn. My master added his voice to the fray as well, yelling angrily. I am sure the people couldn't hear him, but it was nice of him to lend his support.

10:00 a.m. - I was forced to move, as the patch of sun in which I was lying had, for some reason, slid over a few feet. It's not easy being a dog.

1:00 p.m. - I have the most thoughtful master in the world! While it's true he left me alone in the house for several hours, he did set out a treat for me on the kitchen counter. It was even gift-wrapped, a courtesy I wish he'd skipped, since it led to me having a lot of plastic in my teeth. The roast was delicious, though frozen in the center. I don't want to seem ungrateful, but crunching through two inches of rock-hard beef is hardly my idea of a delicacy.

2:00 p.m. - Most unpleasant experience when my master returned home and was furious that I had not eaten the plastic wrap which had been covering my present. He kept pointing at the small pieces of styrofoam and other debris and raving in a most irrational fashion. I'm sorry, but he should know that I can't eat that stuff, it makes my stomach upset. When he began rolling up a newspaper I realized he'd lost all reason and bolted for the front door, which was fortunately open just a crack.

4:00 p.m. - Spent the afternoon with the girls. A most productive day; I was able to mark territory for two blocks. "Drip 'til you drop" is our motto. We had a small snack at an outdoor cafe we like, with meat scraps and bread served out of circular containers with easily displaced lids.

Ran into that rogue Sebastian, who lifted his leg with irritating nonchalance. Does he think I don't know about his obsession with Muffy, that snotty schnauzer from down the road? Last month there wasn't a male in the neighborhood who couldn't be found outside her fence, and Sebastian was at the head of the pack. I let him know I want nothing more to do with him.

5:00 p.m. - What a treat! On the way home a flock of ravens drew my attention to a squirrel that had been flattened by an automobile. After several days in the sun, the aroma was so delicious it made my nose quiver. I rolled in the wondrous fragrance for several minutes, and when I stood up I positively radiated "eau de roadkill." Let Sebastian drool over Muffy - he doesn't know what he's missing.

6:00 p.m. - Of all the times to get a bath! My master, still in a foul mood, made me stand outside in the chill air while he shampooed and rinsed me several times. Every time I shook the water from my fur he, too, became drenched, and in the end he was shivering. Why in the world does he do stuff like this?

9:00 p.m. - Time to sleep, though for some reason I am only allowed on the bed when no one's home. Ah, the life of a dog.

## BULLDOG STATISTICS

### BREED POPULARITY FOR THE BULLDOG

**1975** The Bulldog breed ranked 39<sup>th</sup> with 6,227 registrations.

**1976** Bulldogs ranked 37<sup>th</sup> with 6,554 registrations, a gain of 5.3%.

The number one AKC breed in 1975 was Poodles with 139,750 dogs registered. They were also the number one breed in 1976, but registrations had fallen to 126,799 dogs. The total number of dogs registered by the AKC in 1975 was 1,022,849.

The top ten breeds in 1975 were:

1. Poodles (139,750)
2. German Shepherds (76,235)
3. Irish Setters (58,622)
4. Doberman Pinchers (57,336)
5. Beagles (45,210)
6. Dachshunds (40,617)
7. Cocker Spaniels (39,064)
8. Miniature Schnauzers (37,786)
9. Labrador Retrievers (36,565)
10. Collies (24,464)

(these statistics were published "Dog World" magazine, August 1977)

All statistics below were tabulated by the AKC and printed in the AKC Gazette

### 1986

Bulldogs ranked 32 with 7,961 dogs registered.

The top ten breeds for 1986 and 1987 did not change in rankings. They were:

1. Cocker Spaniels
2. Poodles
3. Labrador Retrievers
4. Golden Retrievers
5. German Shepard Dogs
6. Chow Chows
7. Beagles
8. Miniature Schnauzer
9. Dachshunds
10. Shetland Sheepdogs

### 1987

Bulldogs ranked 31<sup>st</sup> with 8,879 dogs registered.

Heaven goes by favor. If  
it went by merit, you would  
stay out and your dog  
would go in.

Mark Twain



**1988****BREED POPULARITY**

Number One dogs for 1988 and 1989 were the Cocker Spaniels with 108,720 individual dogs registered in 1988 and 111,636 registered in 1989.

The top ten breeds in 1988 were:

1. Cocker Spaniels
2. Labrador Retrievers
3. Poodles
4. Golden Retrievers
5. German Shepard Dogs
6. Chow Chows
7. Rottweilers
8. Beagles
9. Dachshunds
10. Miniature Schnauzers

BULLDOGS ranked 31<sup>st</sup> in breed popularity in 1988, with 9,566 dogs individual dogs registered by the AKC. They also ranked 31<sup>st</sup> in 1989 but had more dogs registered with 10,129 individual registrations.

In 1987 the number of Bulldogs needed to obtain points toward championship in the state of Minnesota were as follows:

1 point: 2M, 2F; 2 points: 7 M, 7 F; 3 points: 12M, 12F; 4 points: 17M, 19F; 5 points: 23M, 31 F

**1990 BREED POPULARITY**

Ranked 32 in individual dogs registered in 1990 with 10,281 compared to the year before which had been 31 with 10,129. The number one AKC breed in 1990 was the Cocker Spaniel with 105,642 individual dogs registered. The year before 111,636 Cocker Spaniels had been registered. The number two breed of dogs in individual registrations for both years was the Labrador Retriever with 95,768 dogs registered in 1990 and 91,107 in 1989. (Note: Cocker Spaniels peaked in popularity in 1990, by the year 2000, their popularity dropped to 14<sup>th</sup> place with 29,393 dogs registered by the AKC.)

Bulldogs ranked 34<sup>th</sup> in litters registered in 1990 with 3,963 compared to the number one breed which was Poodles (all three varieties, toy, mini and standard) at 47,547 litters registered.

**Top Ten Breeds****2000**

1. Labrador retrievers (172,841)
2. Golden Retriever (66,300)
3. German Shepard Dogs (57,660)
4. Dachshunds (54,660)
5. Beagles (52,026)
6. Poodles (43,868)
7. Yorkshire Terriers (43,574)
8. Chihuahuas (38,803)
9. Boxers (38,803)
10. Shih Tzu (37,599)

**1999**

1. Labrador Retrievers (154,897)
2. Golden Retrievers (62,652)
3. German Shepard Dogs (57,256)
4. Dachshunds (50,772)
5. Beagles (49,080)
6. Poodles (45,852)
7. Chihuahuas (42,013)
8. ???
9. Yorkshire Terriers (40,684)
10. Boxers (34,998)



Don't forget to check out  
[www.bcadivision6.org!](http://www.bcadivision6.org!)





# Ask Abbie

This column contains tips about bullies. Please submit questions with/without answers and we'll see if we can get the "long-time" bulldog owners to answer them!

**Dear Abbie,**

**My mom says that my brother is going to be placed in a nice pet home after surgery because there is something wrong with his eye. What is entropion anyway?**

**Rowden the Bulldog**

Dear Rowden,

Basically, this is the rolling in of the eyelid. The eyelashes then rub on the eye. According to the Dog Owner's Home Veterinary Manual it is the most common congenital defect of the eyelids. Unfortunately, the bulldog is a commonly affected breed. It is most common on the lower eyelid, though may occur on the upper as well. It requires surgical correction. Also unfortunately, dogs who have this surgical correction are not allowed to be shown in conformation events, which is why your mom says your brother is going to a pet home. But if you look at page 12, I think you'll be reassured that your brother will be happy in his pet home.

Best Barks to You,

*Abbie*

*A different point of view...*

## *The lucky ones!*

Wigglebutt Bull-a-ton  
Reprinted from the AKC Gazette  
by Susan Sprout

I sometimes wonder if in our quest to breed the perfect dog, we aren't doing a disservice to the individual dogs involved. Let's take a litter of five puppies (three dogs and two bitches), all healthy, bright-eyed and bushy-tailed. Four of the pups, at this young age, look great. Yes, definitely show quality. The other one (let's admit it) just isn't up to snuff. Maybe it's a bite that's slightly off, cow-hocks, or a retained testicle. No matter he has a fault that brands him as "just a pet". Poor soul what a shame! But which ones are actually the lucky ones?

The pet puppy is sold as quickly as possible, and placed very well, with people who really love him. This poor dog has to spend the rest of his life in one home, getting all the love and attention that a family can lavish on their pet. He has his own bed in the house (probably the kitchen) but, of course, he never uses it. Nighttime finds him curled up on his master's bed, sound asleep. Toys galore, more than any one dog can play with. Yet each trip to the supermarket brings another purchase. This pet generally tries out every new dog food on the market, just to see if he might find it tasty.

Health care is never a problem. Every little ache or pain is attended to. An upset stomach is reason enough for a trip to the vet. Nothing is too good for this puppy.

But what has happened to our show quality pups? The breeder, not wanting to make a mistake, decides to keep the bitches, for a while at least. At about six months of age, he finally makes his pick, and sells the other one. She gets a good home, is shown to her championship and bred. Her sister finishes her championship and is bred, also.

The two dogs are sold and each one gets a good show home. But each one is a kennel dog (as are their two sisters), not a house dog. Neither gets as much attention as their poor pet brother, and the attention they do get consists of training, grooming, and the like. Nothing is done just for the fun of it there just isn't enough time for any of that. To many other dogs to take care of, you see.

These dogs don't see the vet as much either. While it's true that their owners know more than the pet owner does about doggy health, there are times when a vet's knowledge is needed. Often, their owners take a wait-and-see attitude. In other words, if it isn't better in a day or two, they get to see the vet.

The one male turns out to be Specials quality, finishing his championship easily. He loves to travel to the shows. And travel he does, for a year or two, at least. Then, he's retired. Now he spends all his time in the kennel, watching the world go by. It's the new Special that gets to go to the shows now.

The other male just never turns out. At about a year of age, he's uprooted. It's not that his owners don't love him, but they can't keep everything, and after all, there's no use in keeping dead weight.

Which are the lucky ones? I know which one I would rather be, and I'm pretty sure I know which one you would rather be, too. But is there a solution to this problem? I only see one - selling to only pet homes. That's unacceptable to most of us. In our race for the most Champions produced, the top winning dog for the year, etc.. as well as the higher price that "show quality" commands, show homes become a must. But these homes, in most cases, are inferior to pet homes, all things considered. I guess it's the price we have to pay for our hobby. It's just a shame that the "lucky" show quality puppies are the ones who pay.

## Microchipping

AKC-CAR (Companion Animal Recovery) helps recover all pets but has the most success recovering those that are permanently identified with a microchip. A microchip is a rice-sized device encoded with a unique and unalterable identification number. The "chip" is implanted just under the skin in the scruff of the neck and is read by a scanner. Microchips are used to permanently identify dogs, cats, birds, horses, ferrets, rabbits, and other species. We recommend the HomeAgain® microchip identification system with lifetime enrollment for the following reasons:

- The HomeAgain microchip has a patented Bio-Bond® anti-migration cap.
- Microchips are individually packaged with a sterile injection system, collar tag and enrollment form.
- HomeAgain microchips are manufactured by Destron Fearing and distributed by Schering-Plough Animal Health.
- The distribution of scanners nationwide has created the infrastructure to make microchipping a successful program. A network of over 20,000 scanners is in place to identify lost pets.
- The HomeAgain microchip is read by many scanners including the universal scanner, developed in 1996 to detect and read the numbers of all major brands of microchip.
- More than 60 field representatives nationwide are trained on the HomeAgain system.
- The American Kennel Club (AKC) and Schering-Plough Animal Health (SPAH) are established companies with a proven track record and a strong future.
- Thanks to AKC-CAR's alliance with SPAH, thousands of lost pets are reunited with their owners every month.

Universal scanners were introduced in the United States in 1996 to detect and read the numbers of all major microchip brands. Since our beginning in 1995, AKC-CAR has allocated a portion of every enrollment toward the purchase of scanners and contributed over \$2 million toward the distribution of scanners to animal shelters, SPCAs, humane societies and animal control agencies.

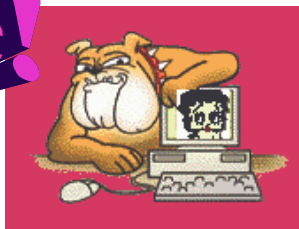
Pets implanted with the HomeAgain microchip receive a bright yellow collar tag imprinted with their unique microchip number and AKC-CAR's toll-free hotline. The tag is free of charge and included with the microchip package at the veterinarian or shelter. Often, the tag alone aids in the pet's return home but the HomeAgain microchip helps ensure that if the tag or collar is ever lost, the pet can still be identified by a scanner and returned to its owner(s).

This article reprinted with permission from © 2001 American Kennel Club Companion Animal Recovery

**Web site!**

Go to

[www.bcadivision6.org](http://www.bcadivision6.org)



Companion Animal Recovery (microchipping) through AKC...

Dena Gustaf has volunteered to start a Division 6 web site. Email or call her with your suggestions....

[maraul@frontiernet.net](mailto:maraul@frontiernet.net)

(507) 683-2549

State	Enrollments	Recoveries
Iowa	13,805	815
Kansas	14,437	1,259
Minnesota	68,968	6,589
Missouri	15,431	1,184
Nebraska	19,326	1,956
North Dakota	1,569	139
South Dakota	1,700	119
<a href="http://www.akccar.org">www.akccar.org</a>		

## The TRUTH About Rescue

Hello division VI Bulldoggers, please allow me to introduce my self. My name is Aaron Johnson from Minnesota. For just over a year now, I have been involved with rescue, and I would like to clear up some myths about rescue.

The biggest myth is that people that turn their dogs over to rescue don't care about them. Most DO care about their bulldogs, and look to rescue to find a suitable home for their dog. After all, what group is more qualified to evaluate and react to meet the dogs needs than the members of the BCA. When placing the dog, it's acceptable to ask for a donation. This is a great way to raise money for rescue.

The second biggest myth is that dogs always come with health and behavioral problems. Some do have health issues, however a lot are placed with out any problems at all. Alot are better behaved than my dogs!

The third biggest myth is that "rescue is not my problem". Or "It's the breeder that is to blame for this dog needing a new home". This is not true. How can a breeder predict a divorce five years from now. Or a job change, or a death in the family, just to name a few. There is no question that some breeders don't do a good job screening prospective homes. If they don't care enough where they place the dog, then it's not likely they will care about a six year female that needs a new home. Much of the time, the owners cannot find the breeder anyway. Even if they would take her back, do you want her to go there? So many people set out to breed bulldogs thinking that they are going to make money. All too soon, they realize that the money is not in this breed, and "POOF!" They are gone.

Another myth is that "rescue is not needed in my area". I doubt this. Rescue is needed everywhere. If bulldog rescue is not in a particular area, all-breed rescue groups are happy to take a bulldog. Bulldogs are in demand, and all-breed groups take donations too. The problem with all-breed groups doing the work is they don't have the expertise about bulldogs. They also don't have a waiting list as long as we do that have people with years of Bulldog experience.

The myth that rescue is a thankless job is far from true. Most of the time the people surrendering the dog have a sincere thank you for caring for their dog as much as they do. The people that are receiving the bulldog are just as grateful. Doing a follow up visit after a few weeks and seeing the happy new home is very gratifying. It seems like everything works out great when the best interest of the dog is in the forefront of each person involved.

One bulldogger said to me "if I volunteer to help with rescue I will have my home full of Bulldogs". There are plenty of ways to help with rescue besides fostering dogs. In our club we are fortunate to have a great group of people involved in rescue efforts. We have ways and means for fund raising. We have a secretary for the paper work. We have a public affairs person that is handling the booths at pet shows. We have a wonderful foster home. Soon we will have an advertising person to get applications and advertise special needs dogs and send out mailings. Other ways to help rescue would be to offer to pick up or drop off even one dog per year. Or offer to follow up by phone after dogs are placed. Or offer to do a follow visit with dogs placed near you. You could volunteer to go into a less experienced home and teach people how to bathe and groom a bulldog. You could offer to drive out to look at a dog that may or may not be a bulldog. In the area of fund raising the sky is the limit. One thing that IS true is that rescue is a lot of work. It can't be done by one person. So please step up to plate and offer what you can. Even if it's as little as donating items for an auction or a raffle. Your help is needed and greatly appreciated!

## Bulldoggers are wonderful!

As many of you have heard, Nancy Fogel died of a massive heart attack at the Heart of Illinois Cluster Dog Shows in Bloomington Il on Fri May 23rd. She was doing what she loved, talking about Bulldogs and sharing her stories outside the ring before exhibiting. Since the coroner has located and informed those necessary, we are free to share the sad news. Many of her friends were there, as well as many who didn't know her well or at all. Every one has been supportive and has tried to assist. With the help of Iowa networking (thank you Darlene and Linda!) we got some information to relieve our minds that she had no other dogs other than the bitch with her. We finally located where she was staying the weekend, checked her motel room and car. Supt. Onofrio Dog shows called home to OK. and found the address and contact to the co-owner of the Bred-By bitch Nancy was to show. Had she not been in Bred-By, By GOSH someone would've exhibited her no matter what! By law, the coroner and police had to claim Nancy's property, including her lovely little bitch, which was removed to animal control. The search for the co-owner was heightened and successful. The bitch was released from animal control the following evening and lovingly cared for by Linda and Jerry Taylor who will be driving her back to their home and on to Waterloo if necessary. The networking thru our Bulldog friends and clubs has been wonderful. The concern from exhibitors from all breeds at the show this weekend has been unreal. A special thanks to the Illinois Valley Kennel Club for all of their assistance, and to Don Rogers an officiating judge at that event for his legal advice.

Nancy, we'll miss you. And don't worry about Sursum Corda's Anna...she's been well-taken care of and will soon be home with Kay Blair.

Those who would like to make memorials please do so in Nancy's name to the charitable fund.

Thank you to Karan and Rudy Kilgus for supplying this.

## Rainbow Bridge

**Just this side of heaven is a place called Rainbow Bridge.**

When an animal dies that has been especially close to someone here, that pet goes to Rainbow Bridge.

There are meadows and hills for all of our special friends so they can run and play together. There is plenty of food, water and sunshine, and our friends are warm and comfortable.

All the animals who had been ill and old are restored to health and vigor; those who were hurt or maimed are made whole and strong again, just as we remember them in our dreams of days and times gone by.

The animals are happy and content, except for one small thing; they each miss someone very special to them, who had to be left behind.

They all run and play together, but the day comes when one suddenly stops and looks into the distance. His bright eyes are intent; His eager body quivers. Suddenly he begins to run from the group, flying over the green grass, his legs carrying him faster and faster.

You have been spotted, and when you and your special friend finally meet, you cling together in joyous reunion, never to be parted again. The happy kisses rain upon your face; your hands again caress the beloved head, and you look once more into the trusting eyes of your pet, so long gone from your life but never absent from your heart.

Then you cross Rainbow Bridge together...  
--Author unknown...



**Division Six Newsletter**  
c/o Karen Zimny  
9106 Wilton Bridge Rd.  
Waseca, MN 56093  
karen@pantheonbulldogs.com

**Be sure to see  
pages 6 & 9 for  
upcoming specialties!**

BCA Division 6 Newsletter: This newsletter is published for the sole use of Division 6 members. Permission to reprint articles in their entirety is granted, given credit is given to Division 6 Newsletter. These articles are not necessarily the opinion of the members or this editor.